

The image features a minimalist, abstract design. Several dark, faceted 3D geometric shapes are scattered across the frame. A thin, curved line connects two of these shapes, with a silhouette of a person riding a bicycle positioned on it. To the left, a street lamp with two globes is attached to a geometric block. To the right, a small, dark tree silhouette grows from another block. The text 'Designcollector' is centered in a sans-serif font, with a vertical bar at the end.

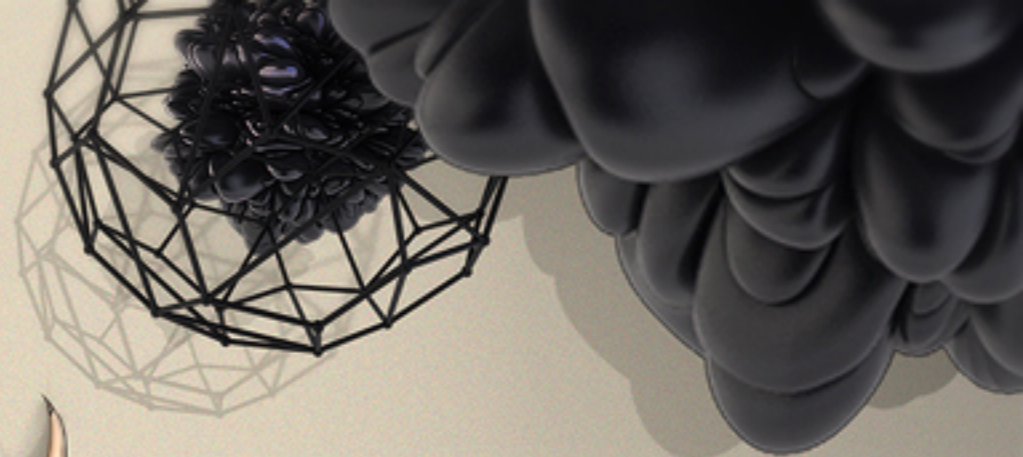
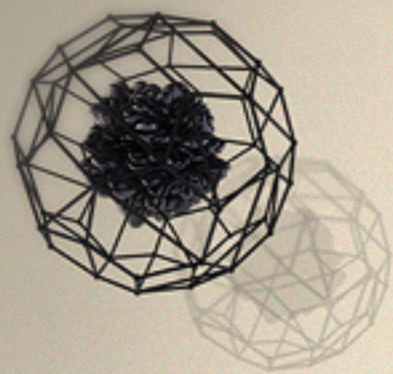
Designcollector |





британская
высшая школа
дизайна





британская
высшая школа
дизайна

A realibus ad
realiora

